

## SEAM/SEAM FINISHES

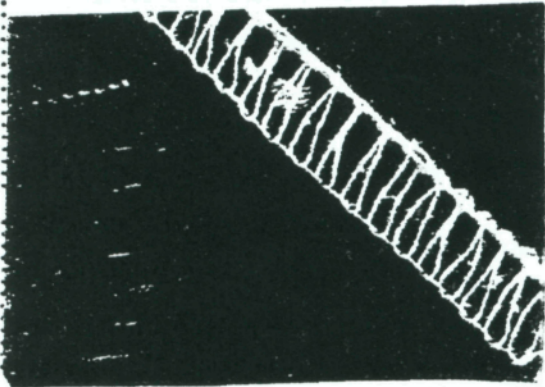
SAMPLE #9

NAME:

DATE:

### FLATLOCK SEAM

A flatlock seam is a good choice for straight seams on knit fabric.



- The traditional flatlock seam is formed by using the two-thread serger stitch.
- A mock flatlock seam is created with the three-thread serger stitch. Loosen the needle tension almost as much as possible, and tighten the lower looper tension. When the serger is properly adjusted, the needle thread forms a V on the underside of the fabric. The lower looper thread forms a straight line along the fabric edge.
- For both types of flatlock seams, serge the seam. Then gently pull on the layers until the fabric lies flat and the cut edges meet. The stitch will have a ladder-like appearance on one side of the garment and loops on the other.