

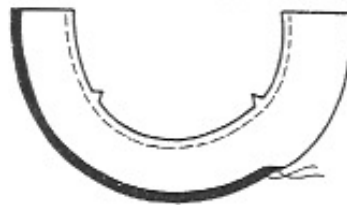
Sample #19

Names:

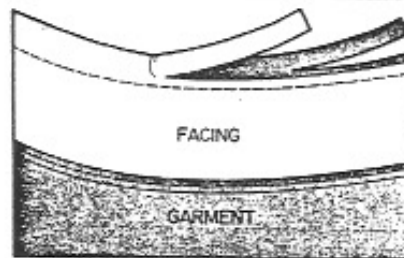
Date:

Facings

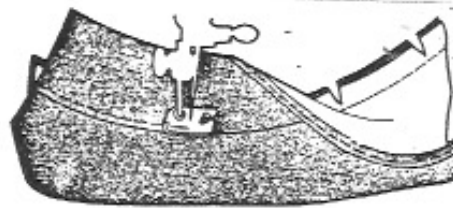
- 1- Cut out garment piece and back facing pattern pieces (with paper scissors).
- 2- Cut out garment piece and back facing piece with fabric.
- 3- Staystitch notched edge of facing and garment neckline. (Regular/permanent stitching—2.5, no backstitching!)
- 4- Finish outer unnotched edge of facing with a seam finish—a clean finish is a good choice. (When attaching facing to a regular garment, facing pieces are sewn together before finishing the outer edge.)



- 5- Pin facing to garment, right sides together, matching notches and seamlines.
- 6- Stitch neckline seam.
- 7- Trim and grade seam allowances to reduce bulk. Clip seam allowances.



- 8- Press seam allowances flat. Turn facing to inside of garment and press again.
- 9- Understitch facing and seam allowances together.
- 10- Tack facing to inside of garment at seam allowances.



Facing

Name _____

Date _____

Class _____

